



Chubasco Project

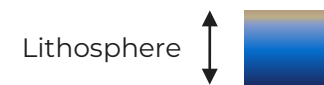
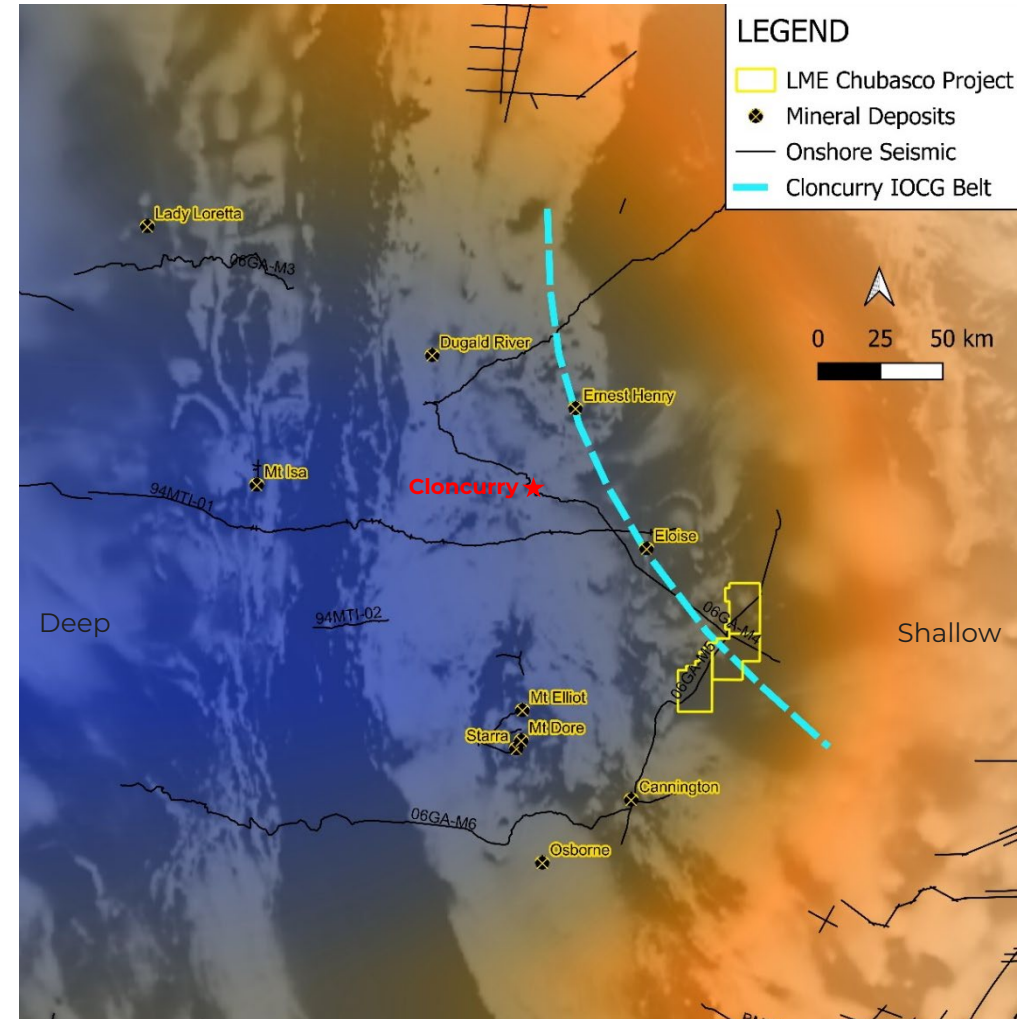
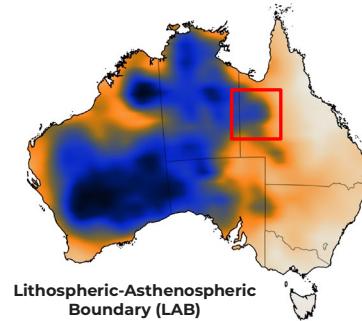
QUEENSLAND IOCG
EXPLORATION



Chubasco

LOCATION

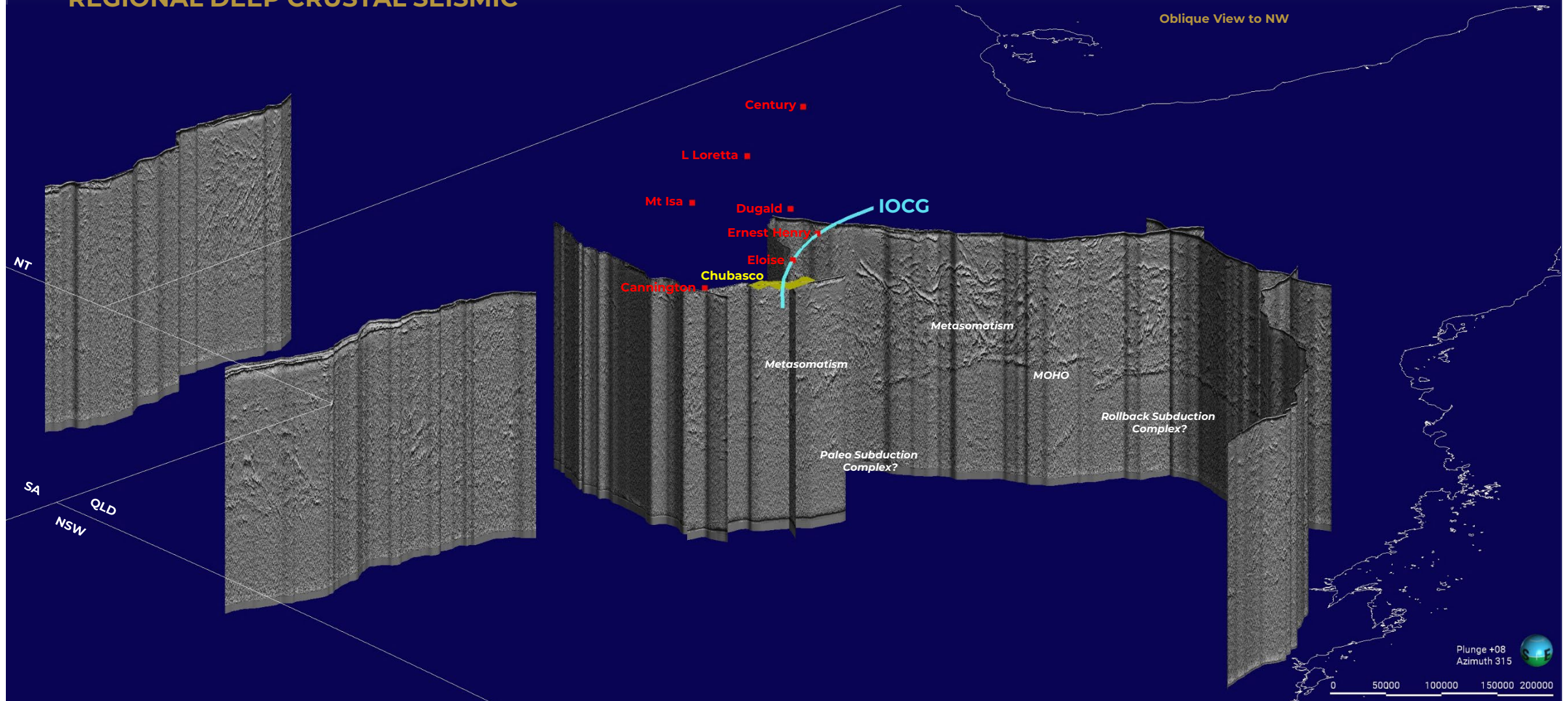
- Located in western Queensland, 100km SW of Cloncurry, near McKinlay, access via Flinders Hwy
- Chubasco tenure straddles the along strike continuation to the SE from Ernest Henry and Eloise IOCG deposits
- Located directly above the 165-175km LAB gradient (Goldilocks Zone) within an inverted basin architecture
- Similar seismic and magnetotelluric signals as Eloise and Ernest Henry
- Coincident high magnetic, gravity & seismic reflector
- Drilling by previous explorers in the north part of the tenure intersected IOCG alteration and mineralisation



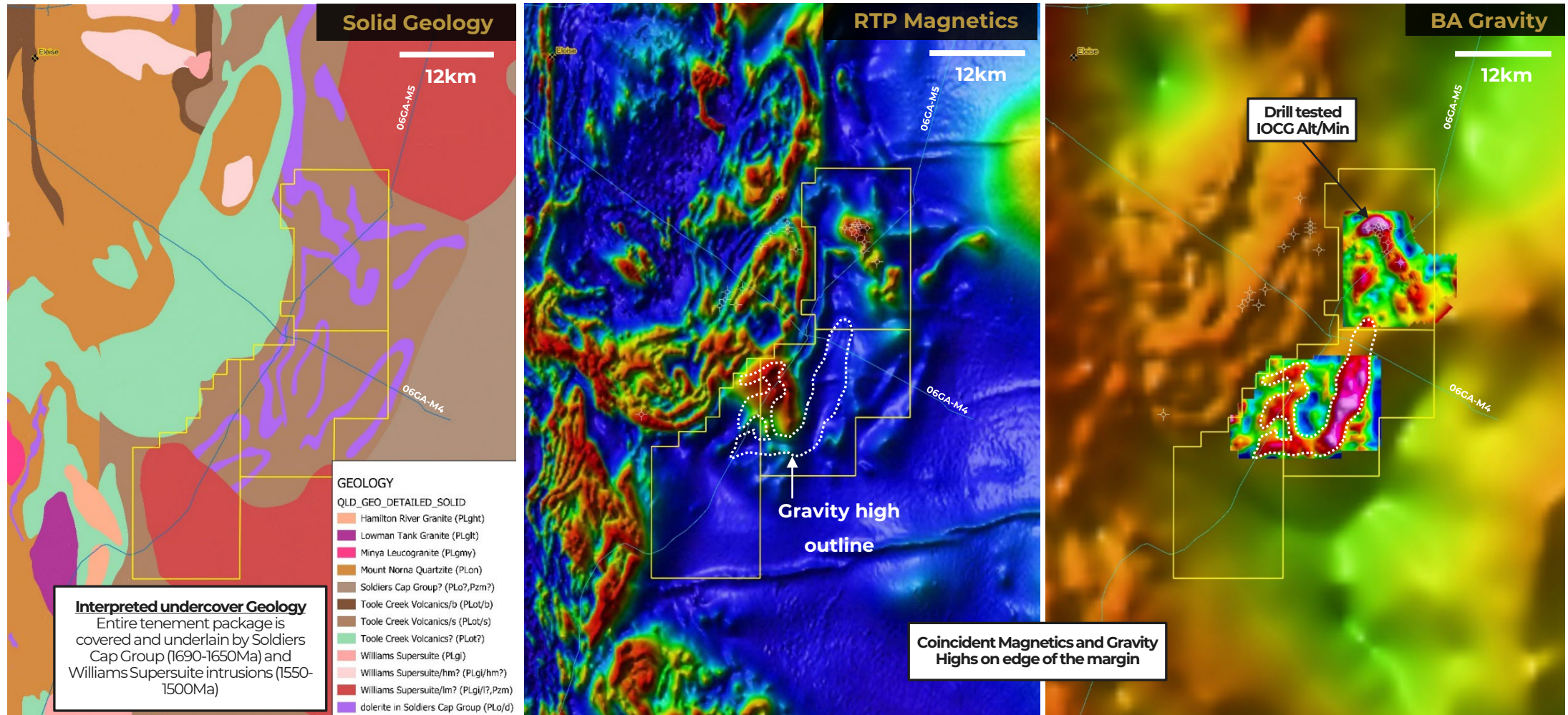
Seismic Tomography
LAB GL Zone 165-175km
(On RTP Greyscale Magnetics)

Chubasco

REGIONAL DEEP CRUSTAL SEISMIC



Geology, Magnetics and Gravity

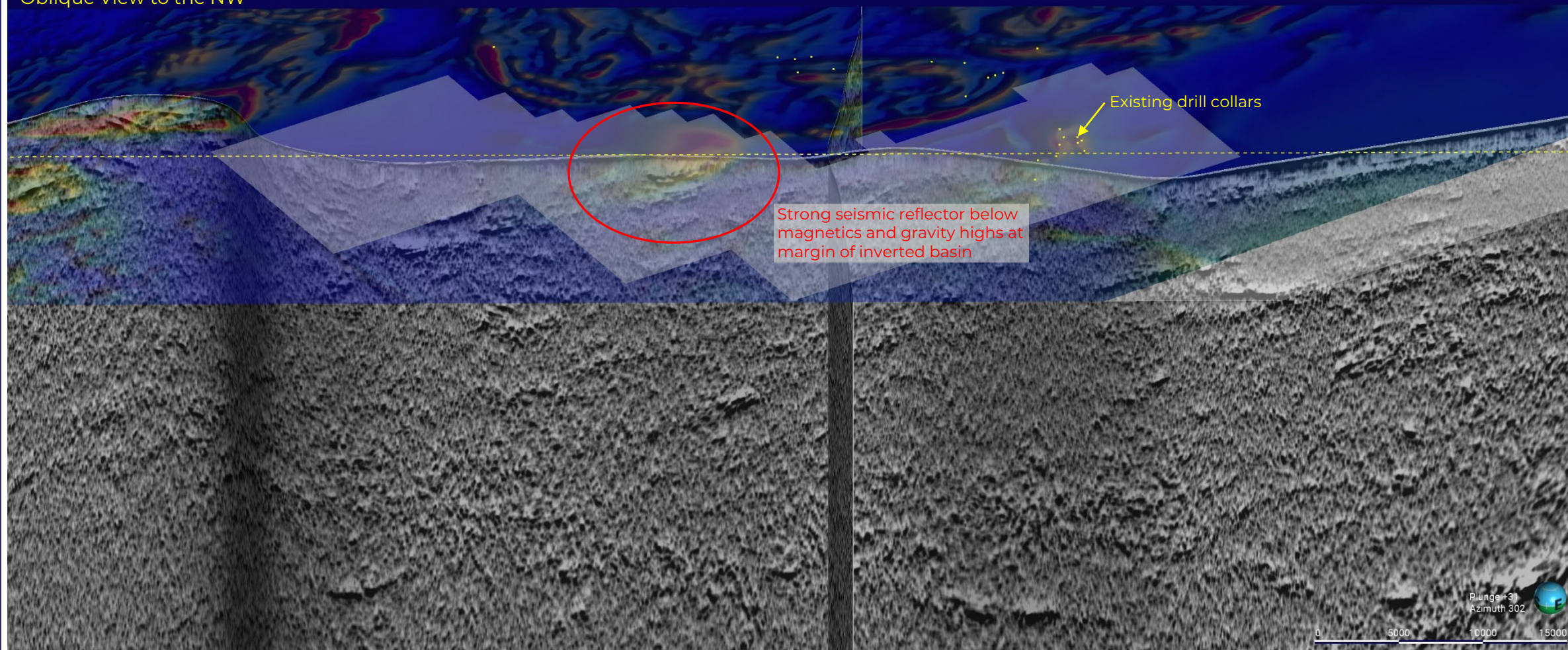


Magnetics, Gravity & Seismic

SW

NE

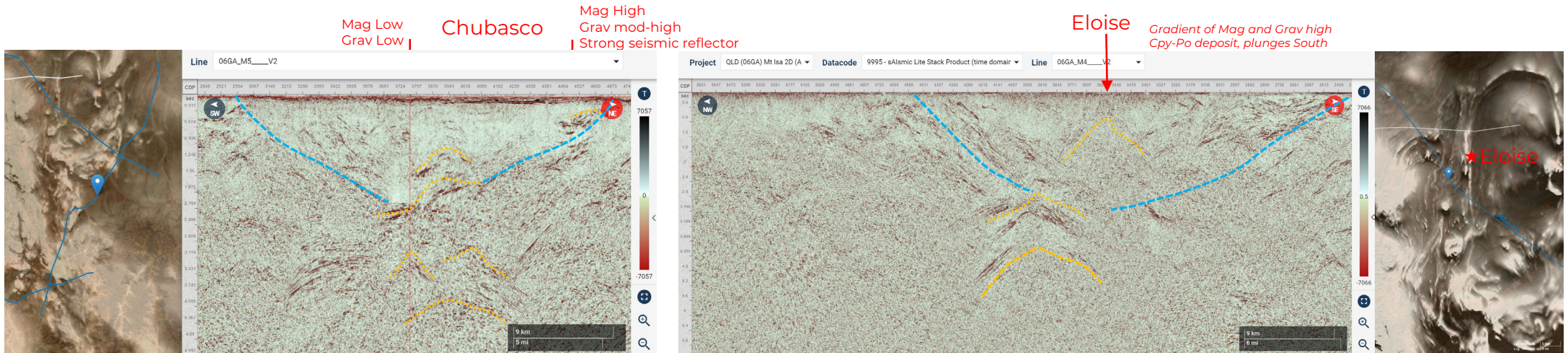
Oblique View to the NW



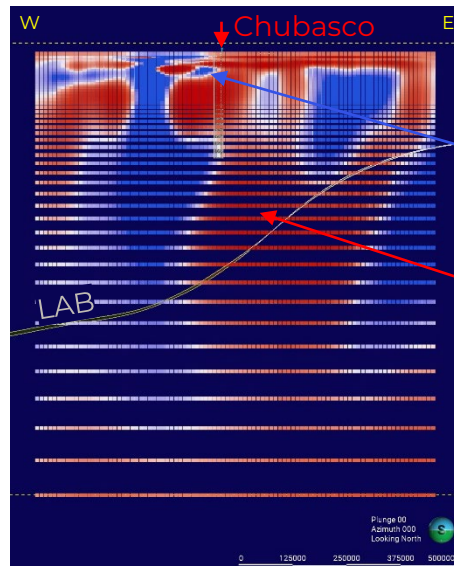
Seismic and Magnetotelluric Comparison

Seismic

- Melt Fronts
- Faults

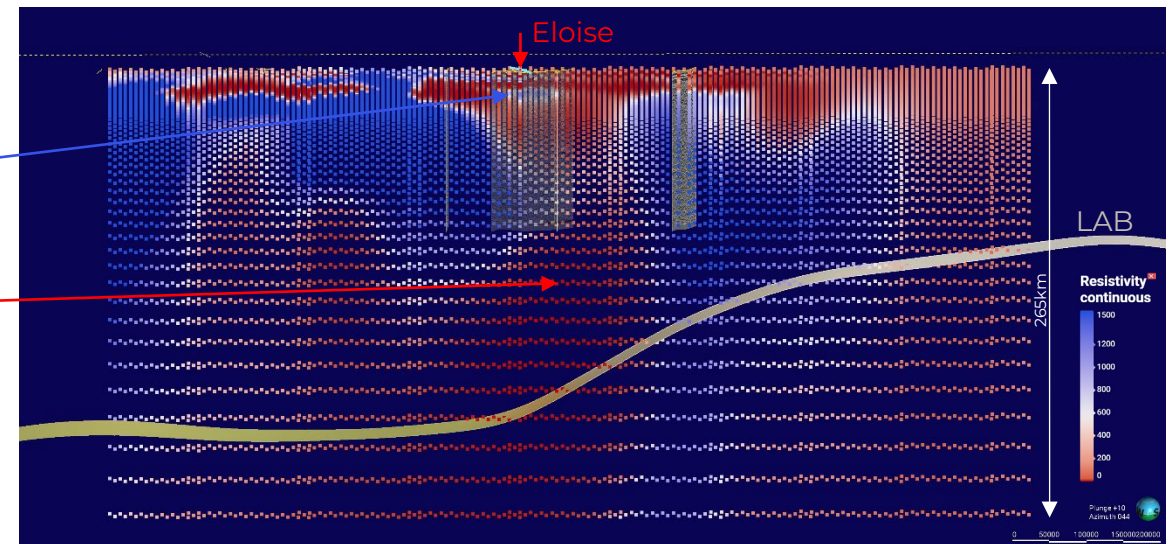


Magnetotelluric Auslamp (50km)



Upper
Crustal
Resistors

Mantle-
Crust
Conductor
at LAB
Boundary
(GL Zone)



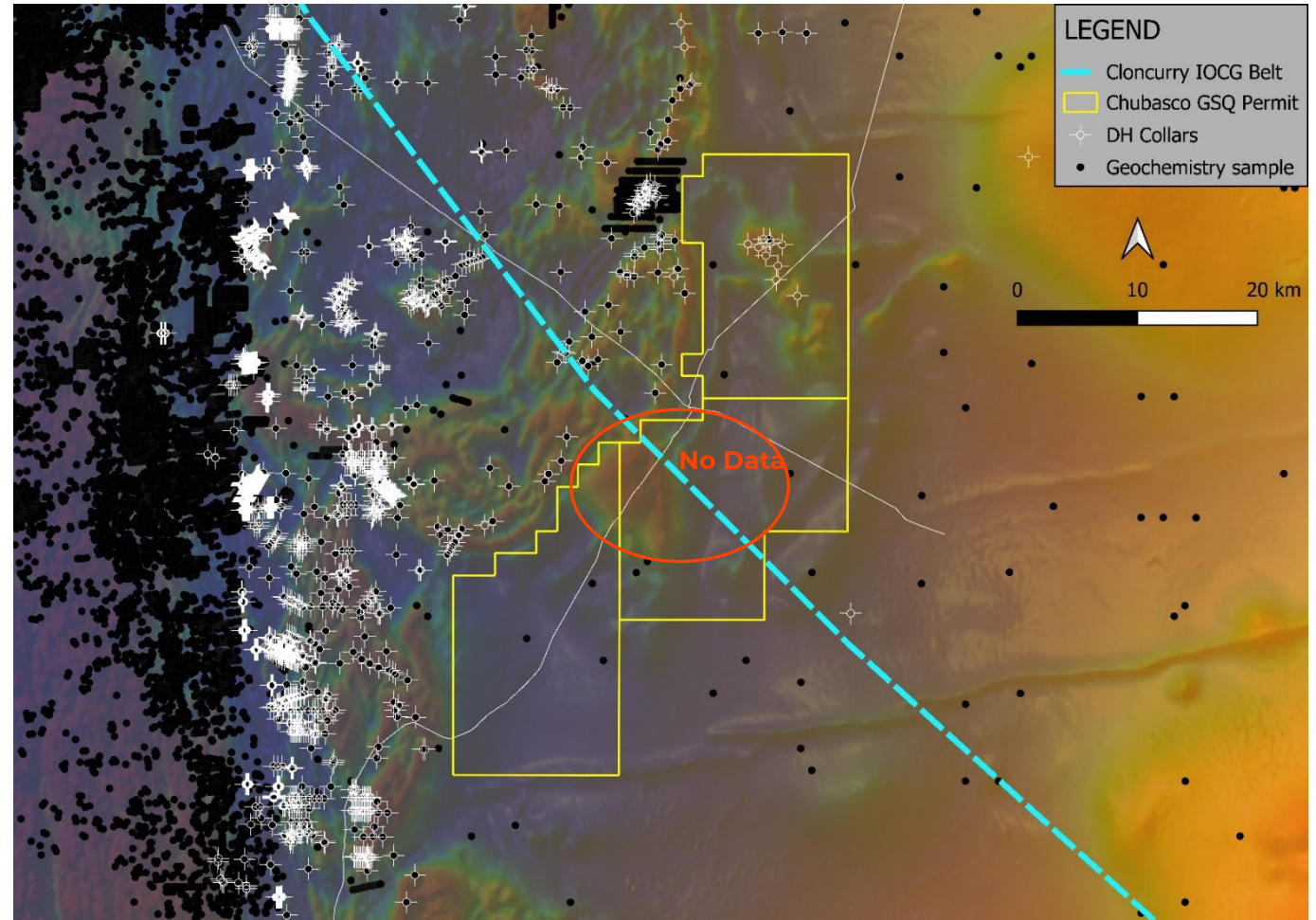
Geochemical Distribution

DRILLHOLE AND SURFACE SAMPLES



No data has been collected to date over area of interest

Drilling in north Chubasco intercepted typical IOCG alteration and mineralisation, nothing economic.

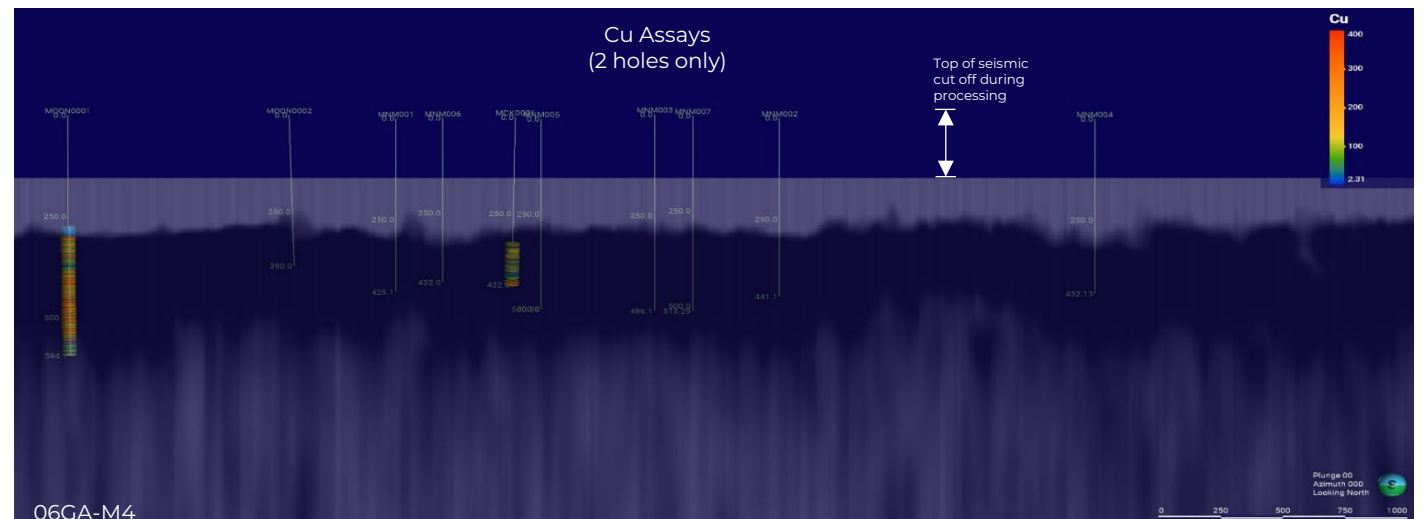
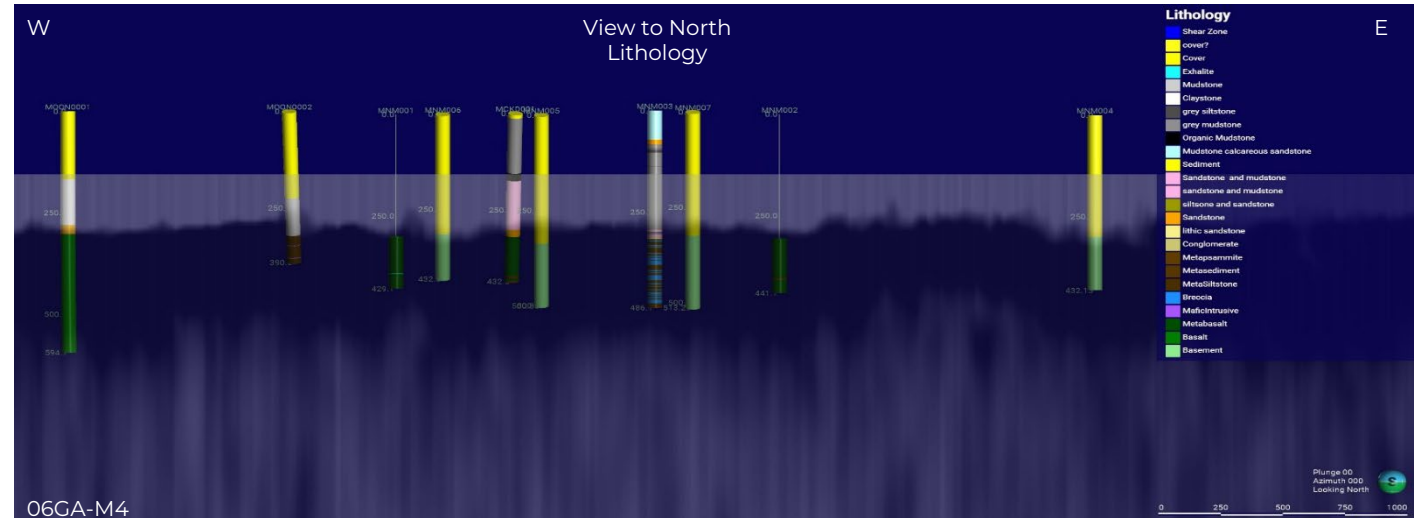
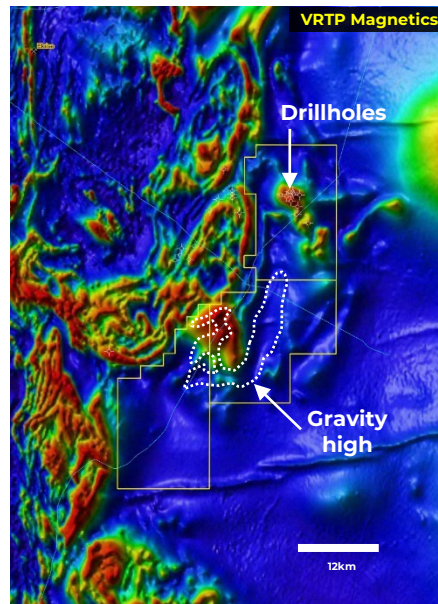


Drillhole data

Drillhole Lithologies and Assays

Previous Drilling

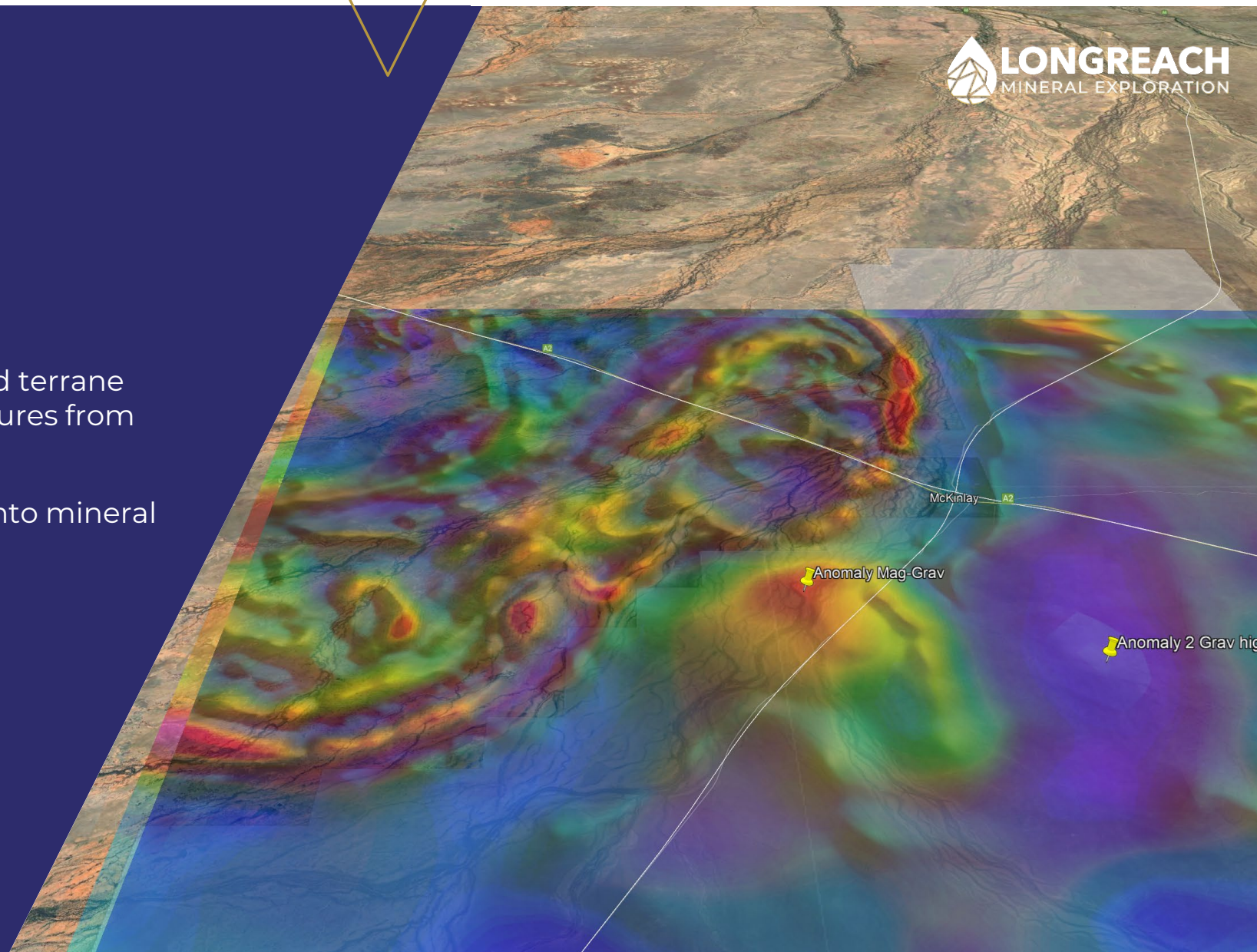
Teck (MCKD0001)
New Hope Group (MNM001-MNM007)
Rio Tinto (MOON001 – MOON002)
Cover depth = 290-310m



Opportunity

CHUBASCO PROJECT

- Early mover advantage in covered terrane with positive mineral system features from multiple independent datasets
- Leveraging our petroleum DNA into mineral systems exploration



Contact Us

**Office**

Suite 1, Level 4, 85 South Perth Esplanade,
South Perth, WA 6151, Australia

**LinkedIn**

[longreach-mineral-exploration](#)

**Email**

r.bills@longreachmineral.com

**Phone**

+61 407445518